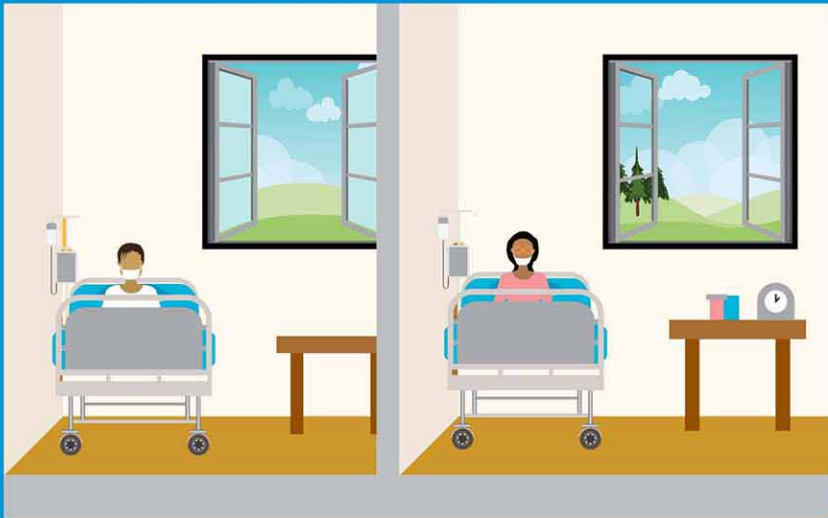


Novel Coronavirus Disease COVID-19

How to manage suspected or confirmed patients with COVID-19 at designated hospital?

- Staff should wear appropriate Personal Protective Equipment when screening patients at the triage station
- Provide triple layer masks to all patients presenting with cough, fever or breathing difficulties
- Remind all patients to practice good respiratory and hand hygiene

MANAGING PLACEMENT



- Immediately isolate suspected and confirmed cases
- To reduce stress and anxiety, explain to patients what you do and why you do it
- If possible, place patients in single rooms
- Suspected and confirmed cases should be kept separate
- Maintain at least 1-metre distance between all patients
- Do not put more than one patient in a single hospital bed

MANAGING THE ENVIRONMENT



- Limit the movement of patients within the health center to reduce potential infection throughout the healthcare facility
- If a patient needs to be moved, plan the move ahead: all staff and visitors who come into direct contact with the patient should wear Personal Protective Equipment (PPE)
- Regularly clean and disinfect the floors of isolation facilities, and surfaces likely to be touched by the patient
- Maintain good ventilation – if possible open doors and windows

MANAGING VISITORS



- Limit the number of visitors per patient
- All visitors should wear the required Personal Protective Equipment and their visits should be recorded
- All visitors should strictly wash hands with soap and water everytime after their visit

Stay
protected!

Stay safe from
Coronavirus!



Contact Ministry of Health and Family Welfare Helpline:
+91-11-23978046 & 1075